

# Longleat Walk



- Spacious two bedroom apartment
- En-suite to large bedrooms, separate family bathroom



Multi-Award Wining

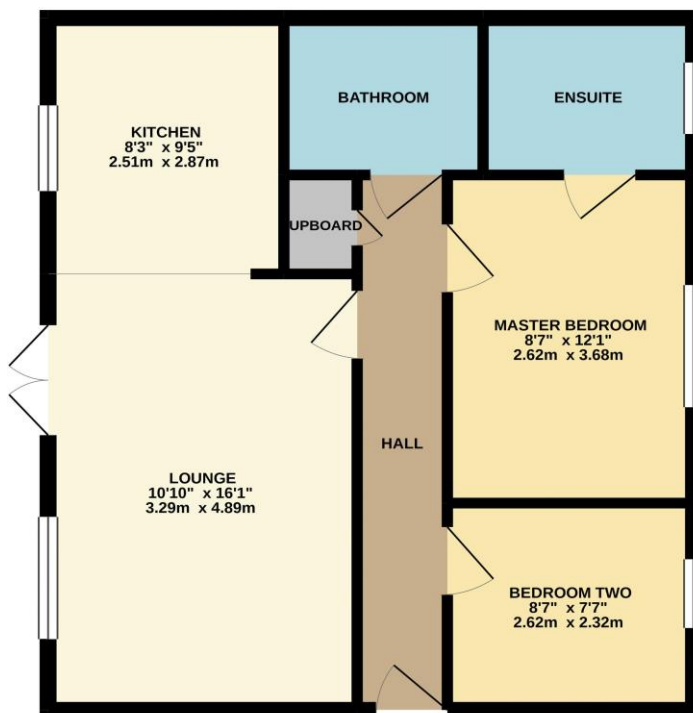




Available with no forward chain, Ingleby Homes welcome to the market this two bedroom, first floor apartment that will be of particular interest to the first time and 'buy to let' purchaser.

Located in the heart of Ingleby Barwick, just moments from the main shopping amenities and close to the 'Sandgate' restaurants and bistro's. With secure intercom access and allocated parking the internal accommodation comprises an entrance hall, generous lounge and open plan fitted kitchen, two spacious bedrooms - one with an en-suite shower room and additional separate bathroom.

GROUND FLOOR  
574 sq.ft. (53.3 sq.m.) approx.



TOTAL FLOOR AREA: 574 sq.ft. (53.3 sq.m.) approx.

Whilst every attempt has been made to ensure the accuracy of the floorplan contained here, measurements of doors, windows, rooms and any other items are approximate and no responsibility is taken for any error, omission or mis-statement. This plan is for illustrative purposes only and should be used as such by any prospective purchaser. The services, systems and appliances shown have not been tested and no guarantee as to their operability or efficiency can be given.  
Made with Metropex ©2020

- Secure 'intercom' access
- Located within the heart of Ingleby Barwick
- No forward chain

## “The Ingleby Barwick Experts”



[www.ingleby-homes.co.uk](http://www.ingleby-homes.co.uk)

01642 671025



AGENTS NOTE: Every care has been taken with the preparation of these details, but they are for general guidance only. Measurements and dimensions are approximate, and any fixtures or fittings shown in photography does not infer that they are to be included within the sale. The agent has not tested any appliances or supplies and professional verification of these should be sought prior to purchase if required. These particulars do not constitute a contract or part of a contract.